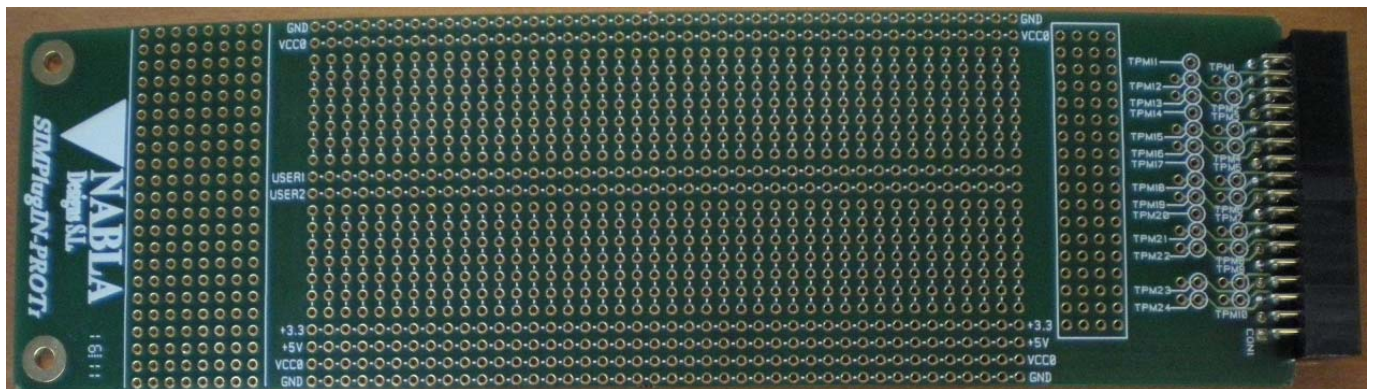


# SIMPlugIN-PROT User Manual

... a SIMPlugIN board® family member

Revision: see file name on page header  
Date: August 26<sup>th</sup> 2011





|   |          |
|---|----------|
| <b>0) INTRODUCTION AND REFERENCES .....</b> | <b>4</b> |
| 0.1) References .....                       | 4        |
| <b>1) GENERAL DESCRIPTION .....</b>         | <b>5</b> |
| <b>2) CONNECTORS .....</b>                  | <b>7</b> |
| <b>3) CONFIGURATION JUMPERS .....</b>       | <b>8</b> |
| <b>4) TEST POINTS .....</b>                 | <b>8</b> |

**APENDICES**

- A) Board layout**
- B) Schematics**
- C) Bill of Materials**

# 0) Introduction and references

This manual describes how to operate SIMPlugIN-PROT board.

SIMPlugIN family boards are intended for engineers (engineering students too) that want to enjoy an easy to use and easy to expand FPGA development system.

SIMPlugIN-PROT is an add-on board that provides convenient prototyping space for rapid connection of user chips and components.

To improve reliability and endurance all holes of the board are completely plated, that is, both sides and the wall of the pit are plated. This gives much more endurance than low cost prototyping boards that have only one side plated and neither the other side nor the wall of the pit are plated

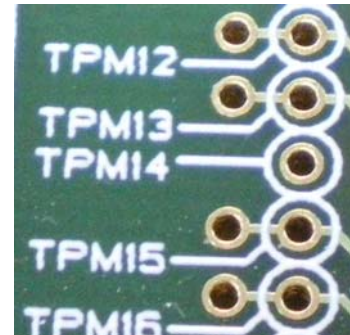
## 0.1) References

- SIMPlugIN- 6XL45 user manual and schematics.

# 1) General description

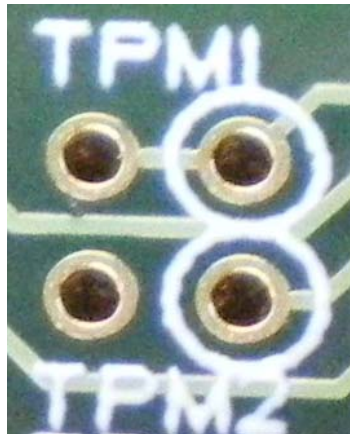
## Test points and “wire points”

All 20 active (that is connected to FPGA pins in SIMPlugIN main board) are connected to two points. One is marked as test point and is intended for user measurements (e.g. oscilloscope probe). The other point is to solder a wire (“wire point”) to any other place of the prototyping space of the board. In the following photograph several test point (TPM12, TPM13, TPM15, TPM16) can be seen; note TPM14 that is GND test point and has no companion “wire point”.



be

**ERRATUM:** there is one exception to the rule “test point + wire point, paired and connected”. As can be seen in the following photograph TPM2 has near it a wire point but the two points are NOT connected. This erratum will be corrected in a future revision of PCB.



For the rest of functionality refer to the photograph in next page.

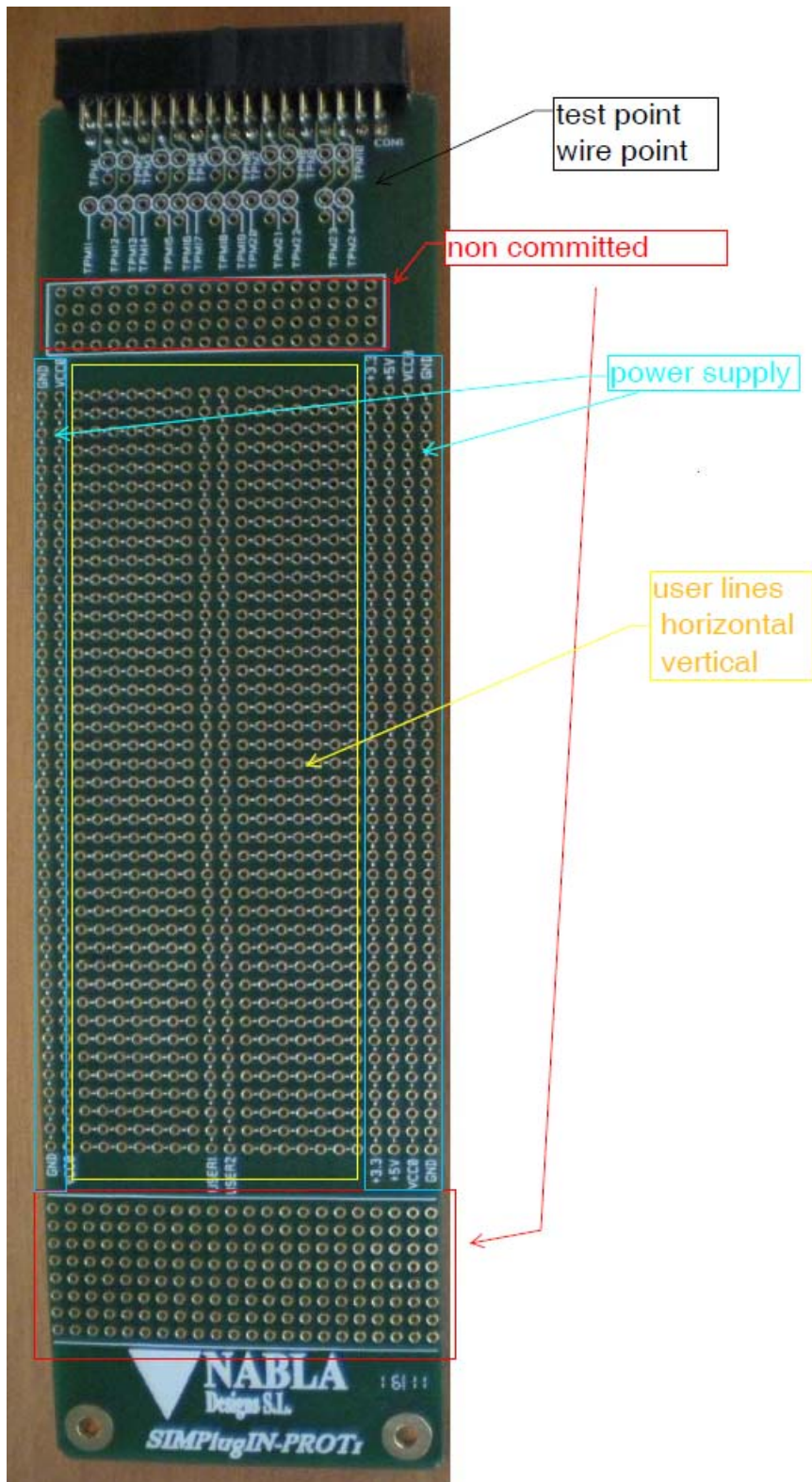
- **Non committed areas.** There are two areas with a matrix of unconnected plated holes.
- **Power supply areas.** Lines of plated holes connected to power pins of the connector (GND, VCC0, +3.3V and +5V).  
**NOTE:** if 3.3 volt or 5 volt are needed then the base board must be configured to supply these voltage in its dedicated pins.
- **User areas.** Independent horizontal and vertical lines of connected holes.

**SIMPlugIN board® family**

Board: SIMPlugIN-PROT

Document: User Manual

File: SIMPlugIN-PROT\_user\_manual\_rev\_01.doc



## 2) Connectors

### Add-on connector

| pin | signal | test point |
|-----|--------|------------|
| 1   | +3.3   |            |
| 2   | +5.0   |            |
| 3   | GND    |            |
| 4   | VCCO   |            |
| 5   |        | TPM24      |
| 6   |        | TPM10      |
| 7   |        | TPM23      |
| 8   |        | TPM9       |
| 9   | GND    |            |
| 10  | VCCO   |            |
| 11  |        | TPM22      |
| 12  |        | TPM8       |
| 13  |        | TPM21      |
| 14  |        | TPM7       |
| 15  | GND    |            |
| 16  | VCCO   |            |
| 17  |        | TPM19      |
| 18  |        | TPM6       |
| 19  |        | TPM18      |
| 20  |        | TPM5       |
| 21  | GND    |            |
| 22  | VCCO   |            |
| 23  |        | TPM16      |
| 24  |        | TPM4       |
| 25  |        | TPM15      |
| 26  |        | TPM3       |
| 27  | GND    |            |
| 28  | VCCO   |            |
| 29  |        | TPM13      |
| 30  |        | TPM2       |
| 31  |        | TPM12      |
| 32  |        | TPM1       |
| 33  | GND    |            |
| 34  | VCCO   |            |

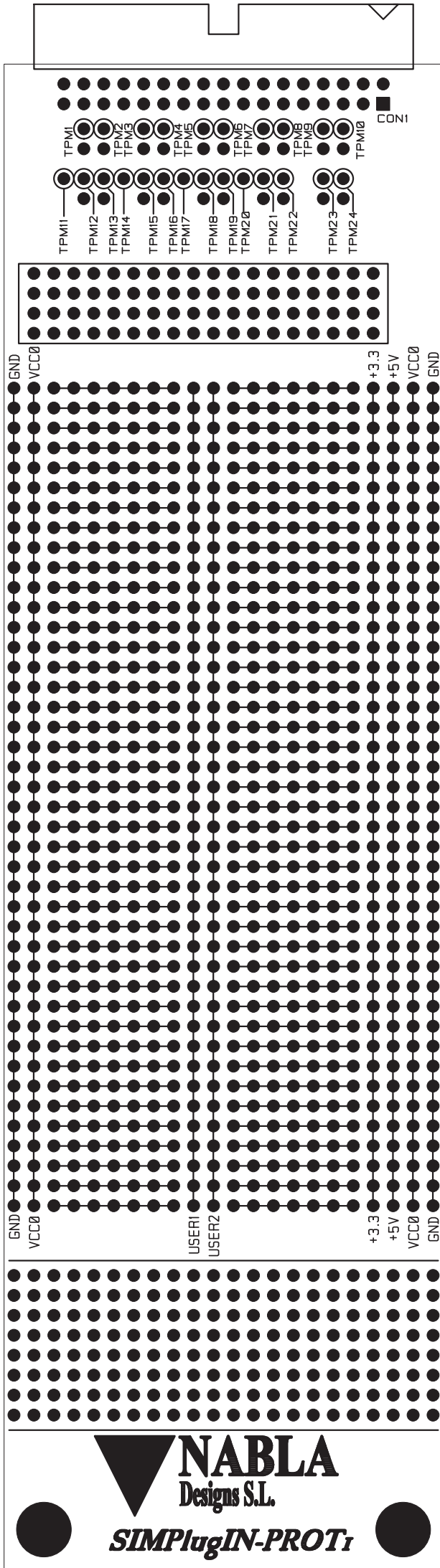
## 3) Configuration jumpers

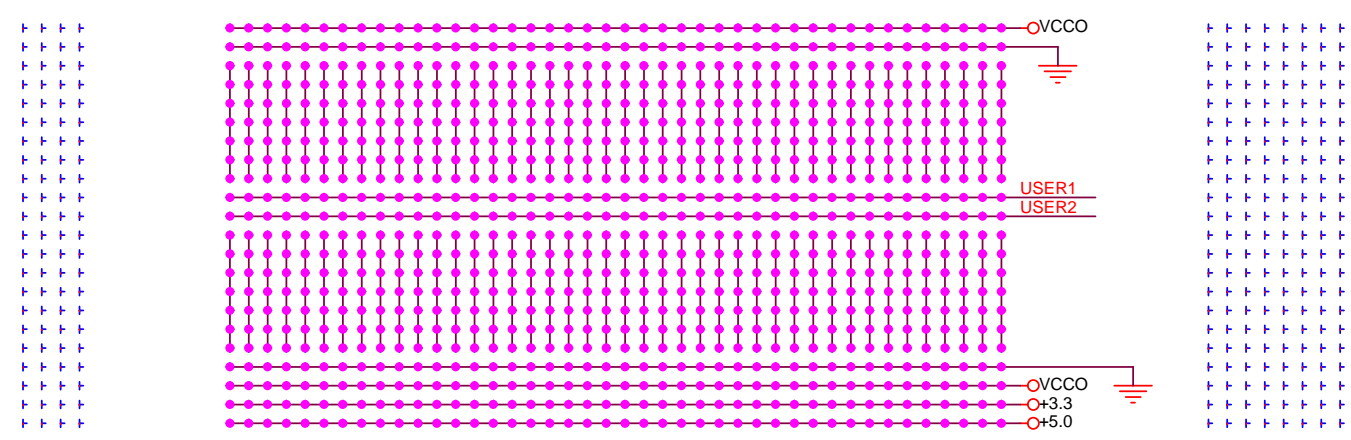
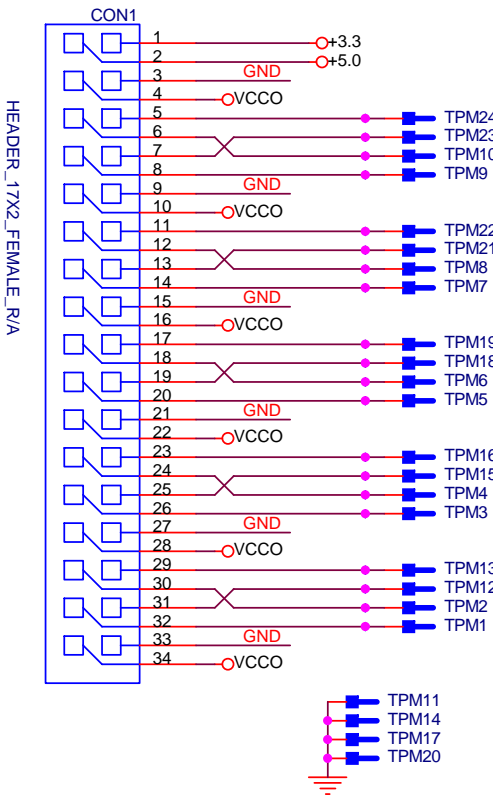
There are no configuration jumpers

## 4) Test points

| add-on connector pin | signal | test point |
|----------------------|--------|------------|
| 32                   |        | TPM1       |
| 30                   |        | TPM2       |
| 26                   |        | TPM3       |
| 24                   |        | TPM4       |
| 20                   |        | TPM5       |
| 18                   |        | TPM6       |
| 14                   |        | TPM7       |
| 12                   |        | TPM8       |
| 8                    |        | TPM9       |
| 6                    |        | TPM10      |
| -                    | GND    | TPM11      |
| 31                   |        | TPM12      |
| 29                   |        | TPM13      |
| -                    | GND    | TPM14      |
| 25                   |        | TPM15      |
| 23                   |        | TPM16      |
| -                    | GND    | TPM17      |
| 19                   |        | TPM18      |
| 17                   |        | TPM19      |
| -                    | GND    | TPM20      |
| 13                   |        | TPM21      |
| 11                   |        | TPM22      |
| 7                    |        | TPM23      |
| 5                    |        | TPM24      |







| Revised: Wednesday, March 30, 2011 |          |  |                        |               |
|------------------------------------|----------|--|------------------------|---------------|
| Item                               | Quantity | Reference  | Part                   | PCB Footprint |
| 1                                  | 1        | CON1   | HEADER_17X2_FEMALE_R/A |               |
| 2                                  | 1232     | TPX1,TPM1,TPX2,TPM2,TPX3,<br>TPM3,TPX4,TPM4,TPX5,TPM5,<br>TPX6,TPM6,TPX7,TPM7,TPX8,<br>TPM8,TPX9,TPM9,TPX10,<br>etc. | DNP header 1x1         | header 1x1    |
|                                    |          |  |                        |               |
|                                    |          |  |                        |               |
|                                    |          |  |                        |               |
|                                    |          |  |                        |               |